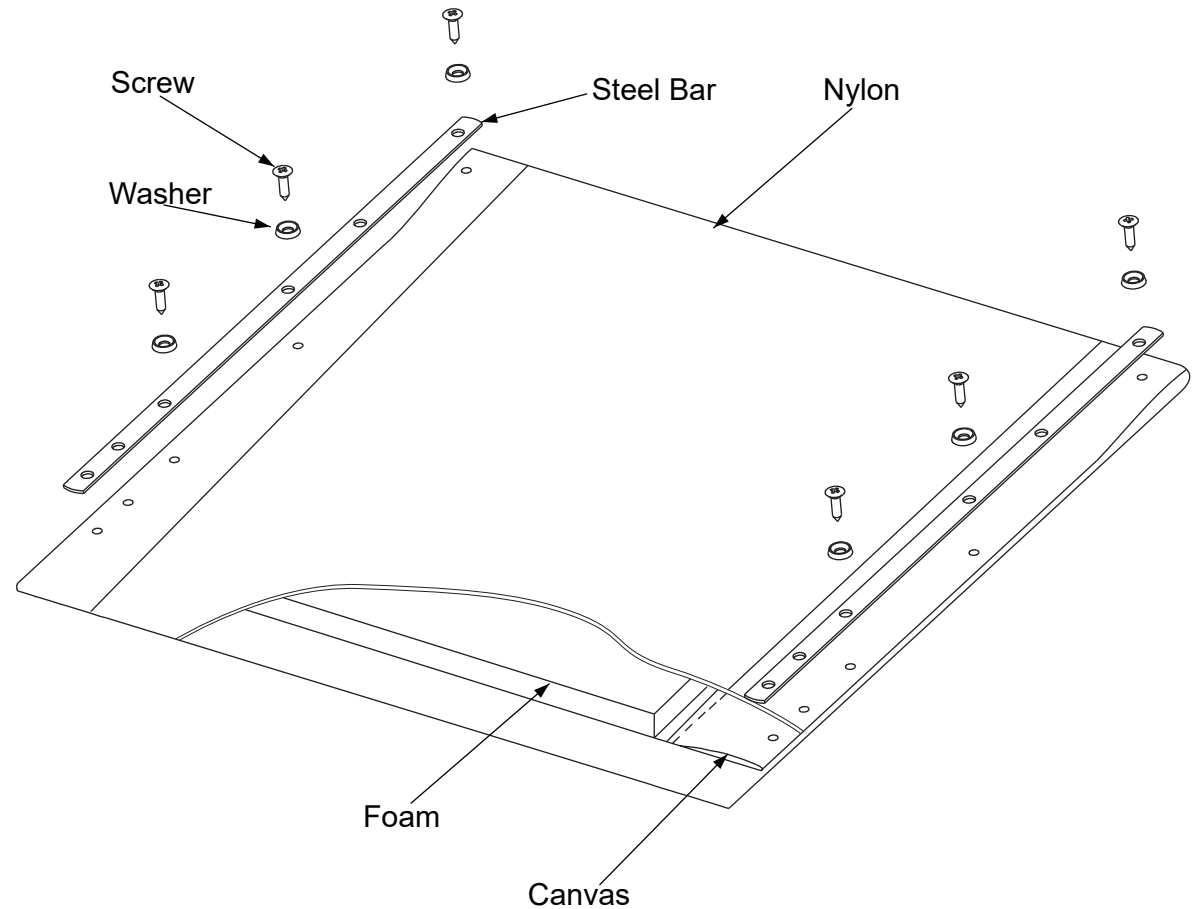


Type	Product Article	Name	Article	Number	Unit
39#	3990445	Foam	1998830	1	ST
		Nylon	1008943	0.274	M
		Canvas	1998716	0.134	LM
		Tapping Screw	1001534	6	ST
		Washer black	1002994	6	ST
		Steel Bar	FC00217	2	ST
42#	3990446	Foam	1998831	1	ST
		Nylon	1008943	0.28	M
		Canvas	1998716	0.14	LM
		Tapping Screw	1001534	6	ST
		Washer black	1002994	6	ST
		Steel Bar	FC00217	2	ST
44#	3990447	Foam	1998832	1	ST
		Nylon	1008943	0.307	M
		Canvas	1998716	0.147	LM
		Tapping Screw	1001534	6	ST
		Washer black	1002994	6	ST
		Steel Bar	FC00217	2	ST
46#	3990448	Foam	1998833	1	ST
		Nylon	1008943	0.317	M
		Canvas	1998716	0.154	LM
		Tapping Screw	1001534	6	ST
		Washer black	1002994	6	ST
		Steel Bar	FC00217	2	ST
48#	3990449	Foam	1998835	1	ST
		Nylon	1008943	0.327	M
		Canvas	1998716	0.16	LM
		Tapping Screw	1001534	6	ST
		Washer black	1002994	6	ST
		Steel Bar	FC00217	2	ST
50#	3990450	Foam	1998837	1	ST
		Nylon	1008943	0.34	M
		Canvas	1998716	0.167	LM
		Tapping Screw	1001534	6	ST
		Washer black	1002994	6	ST
		Steel Bar	FC00217	2	ST



Tolerance	
Value	Tol:
X>0≤50	±0.1
X>50≤100	±0.2
X>100≤150	±0.3
X>150≤500	±0-1
x>500	±1

3991970

EC00312/A

BACK REST JAZZ S50

Plan No.

STEP 1/2

EC00312/A

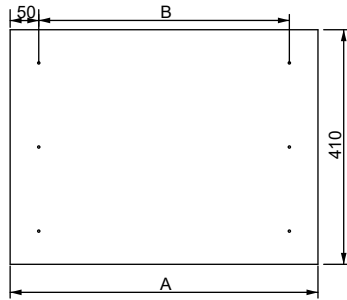
3				
2				
1				
No.	Requested by	Change description	Date	Init.

Scale:1:4	Drafted	Verified	Confirmed
Date	01/02/2016	01/02/2016	01/02/2016
Init.	Mars	JJQ	TG

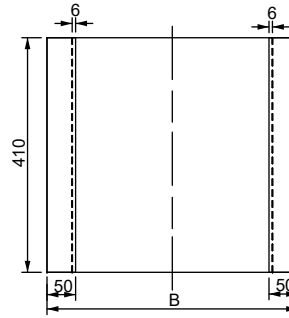




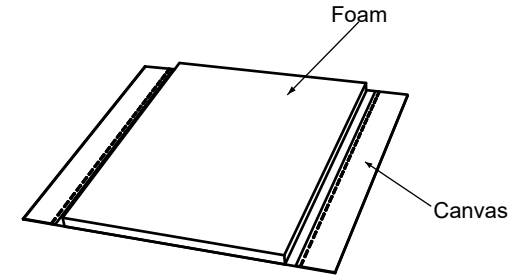
Cuting the shape of Canvas



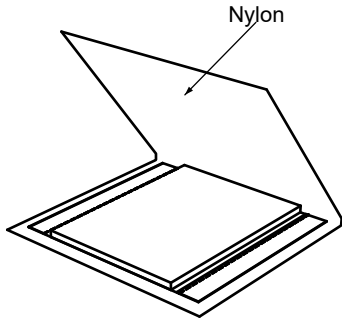
Drilling holes by C525049



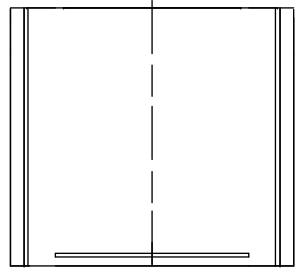
Stiching



Glue Foam and Canvas use 1999774

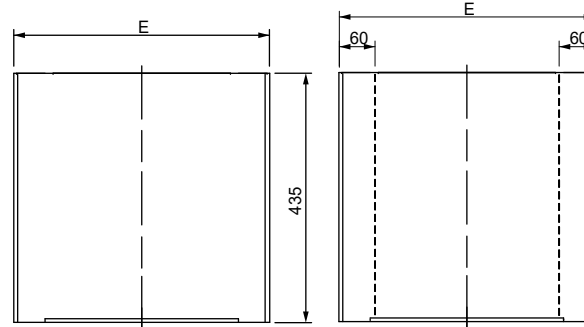


Cover by Nylon

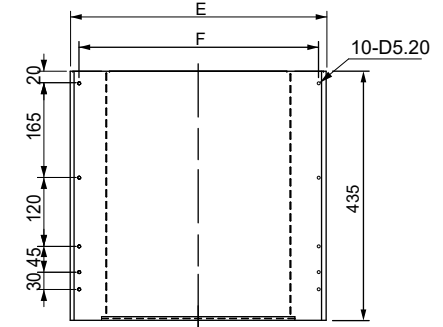


High frequency welding
By matrix: C400235 39#
C400237 42#
C400238 44#
C400239 46#
C400240 48#
C400241 50#

Cut off the excess part along the weld line

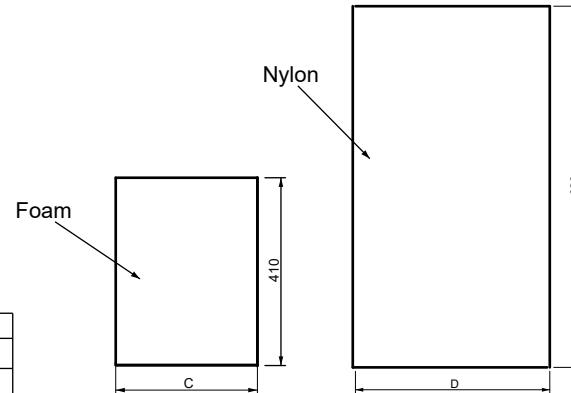


stiching



Punching the holes
By C200873

Type	39#	42#	44#	46#	48#	50#
A	495	525	545	565	585	605
B	390	420	440	460	480	500
C	260	290	310	330	350	370
D	445	475	495	515	535	555
E	395	425	448	470	485	505
F	365	395	415	435	455	475



Tolerance	
Value	Tol:
X>0≤50	±0.1
X>50≤100	±0.2
X>100≤150	±0.3
X>150≤500	±0-1
x>500	±1

3991970

EC00312/A

BACK REST JAZZ S50

Plan No.

STEP 2/2

EC00312/A

3				
2				
1				
No.	Requested by	Change description	Date	Init.

Scale:1:4	Drafted	Verified	Confirmed
Date	01/02/2016	01/02/2016	01/02/2016
Init.	Mars	JJQ	TG

