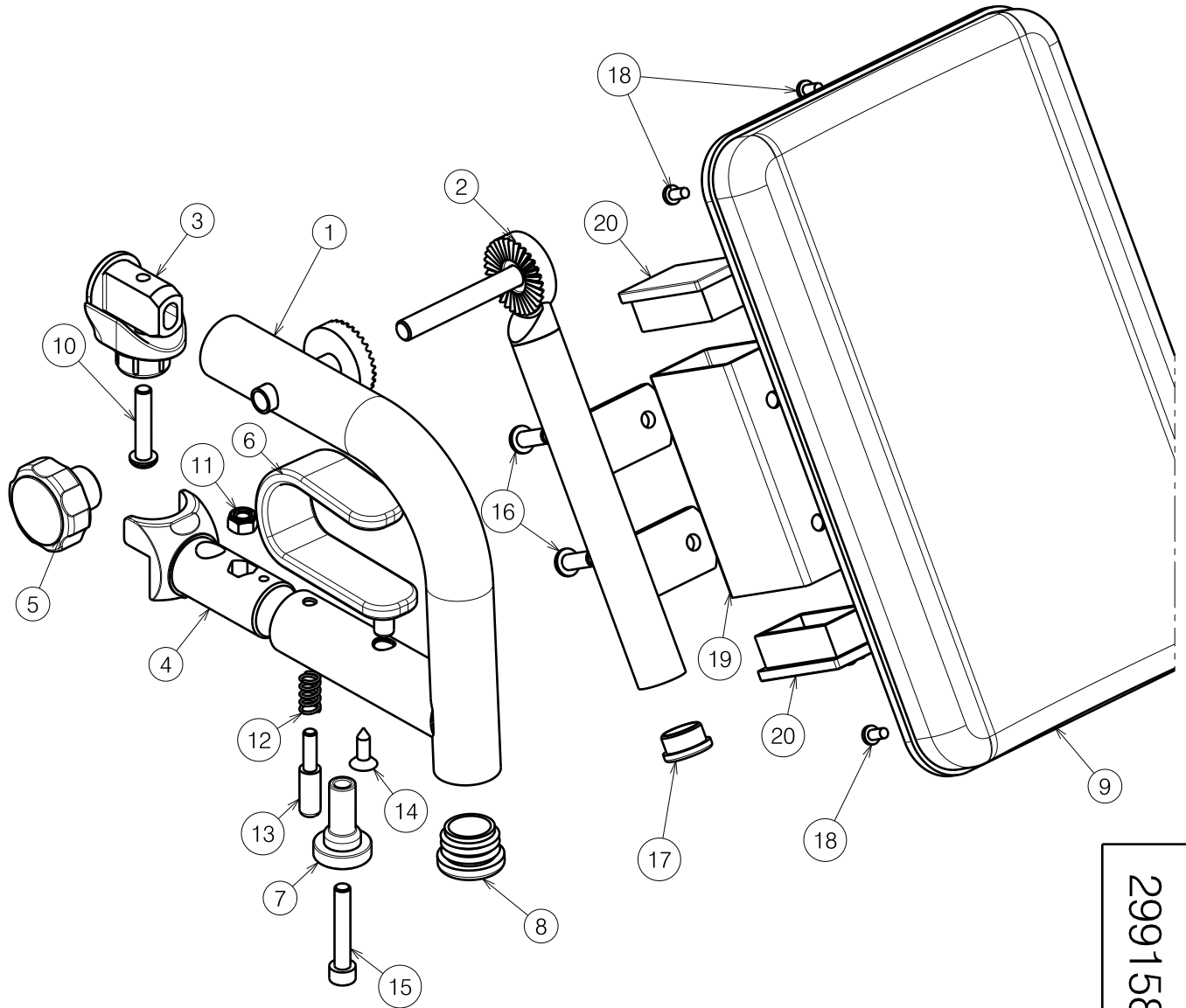


| Material |                  |                 |          |
|----------|------------------|-----------------|----------|
| No.      | Plan             | Article         | Quantity |
| 1        | Y018563          | 1771454 (R)     | 1        |
|          | Y018144          | 1771354 (L)     | 1        |
| 2        | Y018612          | 1772354         | 2        |
| 3        | X004414          | 1904130         | 2        |
| 4        | XC00129          | 3990491         | 2        |
| 5        | Ø35 - M8         | 1998550         | 2        |
| 6        | XC00130          | 3990492         | 2        |
| 7        | X004660          | 1905195         | 2        |
| 8        | Ø25              | 1001608         | 2        |
| 9        | ---              | 1002163 (Small) | 2        |
|          | ---              | 1002158 (Large) | 2        |
| 10       | M6x30 ISO7380    | 1009588         | 2        |
| 11       | M6 DIN985        | 1001680         | 2        |
| 12       | X002169          | 1992791         | 2        |
| 13       | XC00128          | 3990490         | 2        |
| 14       | 4.8x15 DIN7981   | 3990131         | 2        |
| 15       | M6x35 DIN912     | 1001496         | 2        |
| 16A      | M6x16 ISO7380    | 1008459         | 4        |
| 16B      | M6x70 ISO7380    | 1993891         | 4        |
| 17       | Ø19              | 1001602         | 2        |
| 18       | D3.9x9.5 DIN7981 | 1001530         | 8        |
| 19*      | YP07059          | 2744454         | 2        |
| 20*      | 50x30            | 1009315         | 4        |




Right side only depicted, quantities are for 1 pair

2991581

\* Optional elevated height

E000812 / C

|                    |            |            |            |   |
|--------------------|------------|------------|------------|---|
| BK7 / BL7 V-SERIES |            |            |            | Plan No.  |
|                    |            |            |            | E000812 / C   |
| Scale: 2:5         | Drafted    | Verified   | Confirmed  |  |
| Date               | 11/04/2012 | 06/02/2019 | 06/02/2019 |   |
| Initials           | SV         | PA         | PJ         |   |