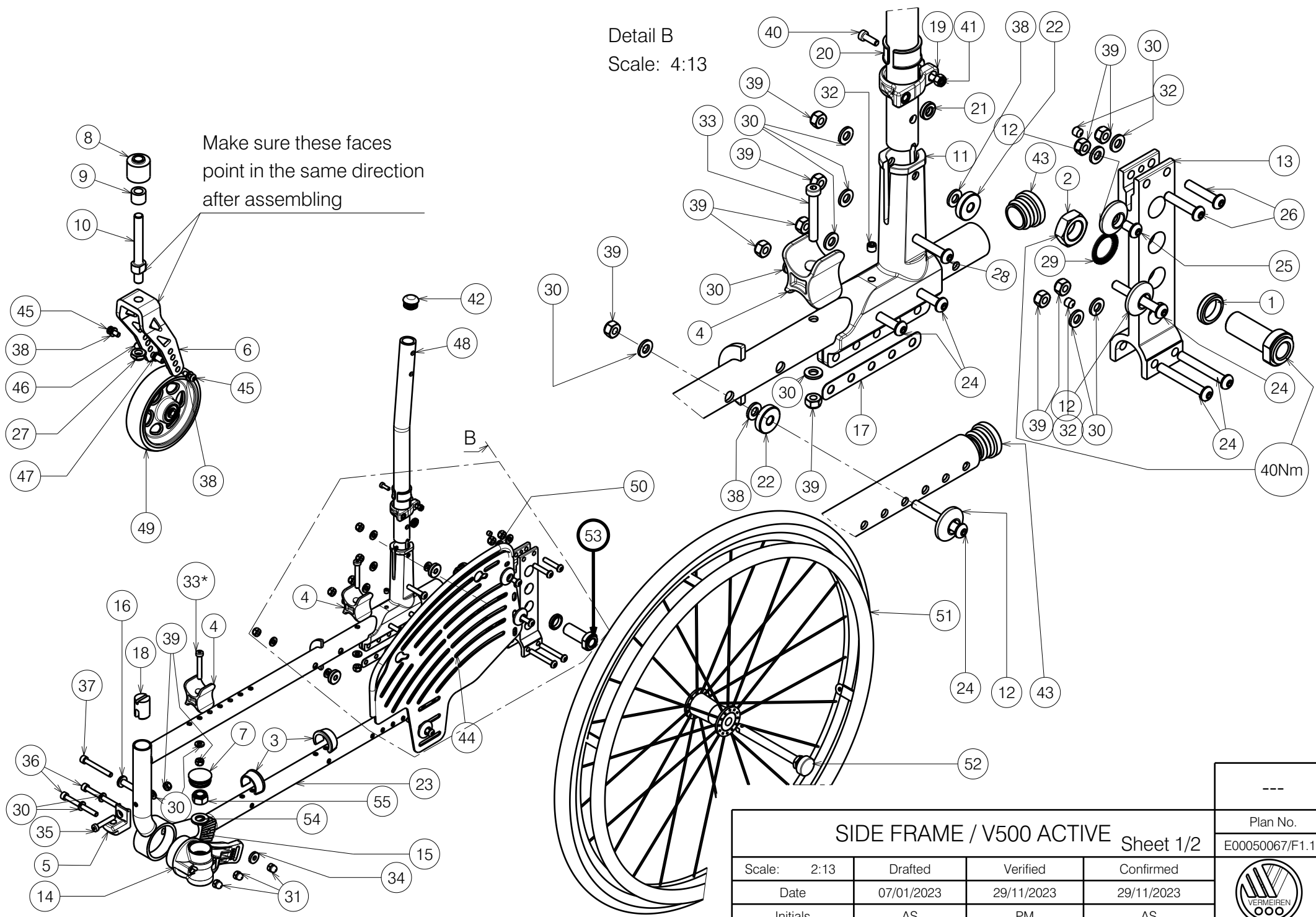


Detail B
Scale: 4:13

Make sure these faces point in the same direction after assembling



Plan No.			
E00050067/F1.1			
Scale: 2:13	Drafted	Verified	Confirmed
Date	07/01/2023	29/11/2023	29/11/2023
Initials	AS	PM	AS




Bill of Material			
No.	Plan	Article	Quantity
1	X001380	1009726	2
2	X002437	1992699	2
3	X004308	1904129	4
4	X004309	1904133	4
5	X004415	17193	2
6	XP01650	GP10399	2
7	X004436	1903928	2
8	X004444	1722354	2
9	X004445	1904571	2
10	X004466	1730700	2
11	X004470	1713654	2
12	XP00366	2990331	6
13	X004471	1713399	2
14	X005865	1915642 (L)	1
	X005866	1915643 (R)	1
15	X004597	1905121	2
16	X004689	1734600	2
17	X004758	1906004	2
18	X004818	1906184	2
19	XP02043	2993671	2
20	XP02042	2993672	2
21	P00050255	2997558	2
22	XP00227	2990147	4
23	P00023284	26384... (L)	1
	P00023286	26385... (P)	1
24	M6x45 ISO7380	2994086	12
25	M6x10 ISO7380	2994127	2
26	M6x30 ISO7380	2994129	4
27	M12x1,25	1994605	2
28	M6x35 ISO7380	2994131	2
29	M16 DIN17222	1911653	2
30	M6 DIN125	2994414	24
31	M6 DIN986	2994059	6
32	M6x6 DIN914	1909924	6
33*	M6x40 DIN7984	2995263	4
34	M6 DIN7379	2995261	2

Bill of Material			
No.	Plan	Article	Quantity
35	M6x35 DIN7984	2994654	2
36	M6x60 DIN912	2995262	4
37	M6x50 DIN912	2995258	2
38	M6 DIN125	2994068	8
39	M6 DIN 985	2994063	24
40	M4x12 DIN7984	1907582	2
41	M4 DIN985	2994901	2
42	Cap Ø22	1990648	2
43	Cap Ø25	1991857	4
44	P00048640	2668954	2
45	M6x16 ISO7380	2994067	4
46	XP00341	1854900	2
47	P00049308	2997553	4
48	P00048919	2669065	2
49	Wheel 5"	2995656	2
50	---	1003299	0,78m
51	Wheel 24"	1914849	2
52	XC00037	3990106	2
53	P00050165	GP00322**	2
	X005828	1905244	2

* When brake mounted under X004309 (1904133) use screw 2994086 (x2)

** only with B82

- Only left side depicted
- Quantities are for one wheelchair

SIDE FRAME / V500 ACTIVE Sheet 2/2				---
				Plan No.
				E00050067/F1.1
Scale: 2:13	Drafted	Verified	Confirmed	
Date	07/01/2023	29/11/2023	29/11/2023	
Initials	AS	PM	AS	